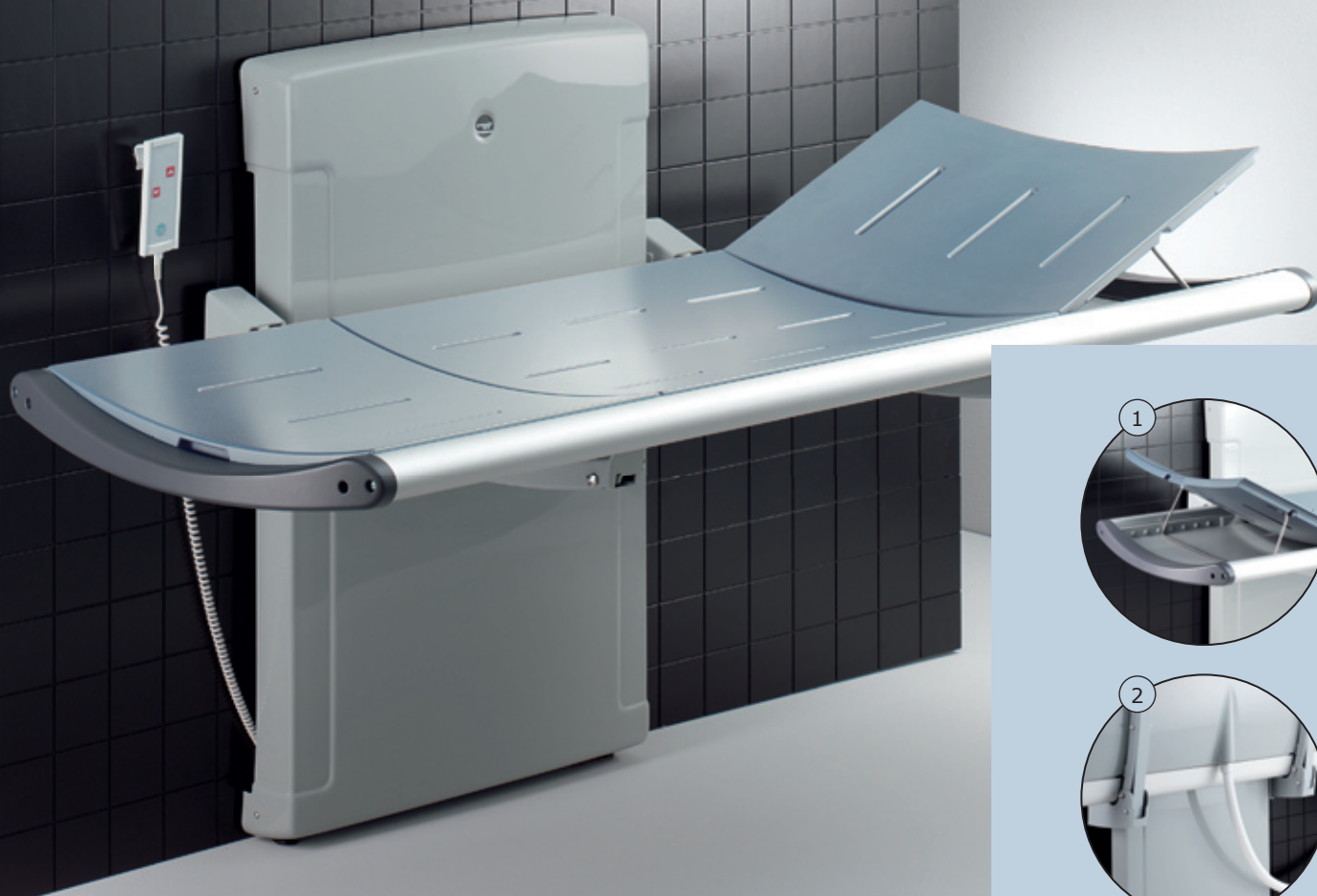


# A nursing bench for a flexible bathroom



Pressalit Care has introduced a new nursing bench as an integrated part of its product line.

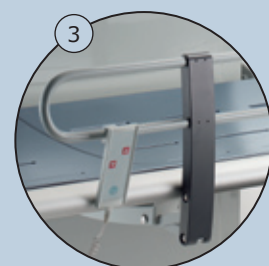
In function and design, the bench is part of Pressalit Care's well known family. It is height-adjustable and extremely flexible. The individual bench modules can adapt to the user's particular needs.

The nursing bench can be raised from a height of 300 mm up to 1000 mm by means of a wall-mounted lifting unit. Transfer from a wheelchair to the bench is effortlessly done, and the helper can select the optimal working height. Raising and lowering the bench is easily done with a remote control unit.

The bench has also been designed with maximum safety and comfort in mind, both in its slightly curved bench – suitable for lying down – and the foam cushions and synthetic fabric, which prevent the kind of uncomfortable surprises that come from cold, hard surfaces.

The water collection tray is integrated into the system and removable cushions make the bench easy to clean.

After use, the bench can be folded against the wall, allowing for complete use of bathroom space.



- 1 Back rests at both ends can be lifted from the bench and mounted at the proper angle.
- 2 The flexible hose attached to the centre mounted outlet of the water collection tray can be connected to either an outlet in the floor or on the wall.
- 3 The system's flexible modules include a bed guard that can be raised or lowered with a single movement.